

Do Patients With Sarcoidosis Have a Higher Long-Term Risk of VTE Compared With the Background Population?

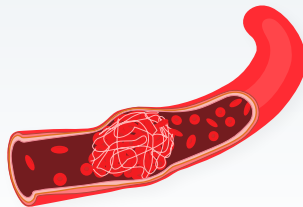
STUDY DESIGN

- Danish nationwide cohort study
- Patients 18 years or older with newly diagnosed sarcoidosis without prior VTE matched 1:4 by age, sex, and comorbidities with individuals from the background population
- Primary outcome: **VTE**



RESULTS

Group	Patients Enrolled	10-Year Risks		
		VTE	Pulmonary Embolism	DVT
Sarcoidosis	14,742	2.9%	1.5%	1.6%
Matched Individuals	58,968	1.6%	0.7%	1.0%
		<i>P</i> < .0001	<i>P</i> < .0001	<i>P</i> < .0001



- VTE within first year of diagnosis
Sarcoidosis group: HR, 4.94; 95% CI, 3.61-6.75
- VTE after first year of diagnosis
Sarcoidosis group: HR, 1.65; 95% CI, 1.45-1.87
- 3-month mortality
No significant difference: adjusted HR, 0.84; 95% CI, 0.61-1.15

In this study, sarcoidosis was associated with a higher long-term risk of VTE compared with a matched background population.