

Have Rates of Frailty, Disability, Multimorbidity, and Dementia in Older Adults Admitted to the ICU Changed Over Time?

STUDY DESIGN

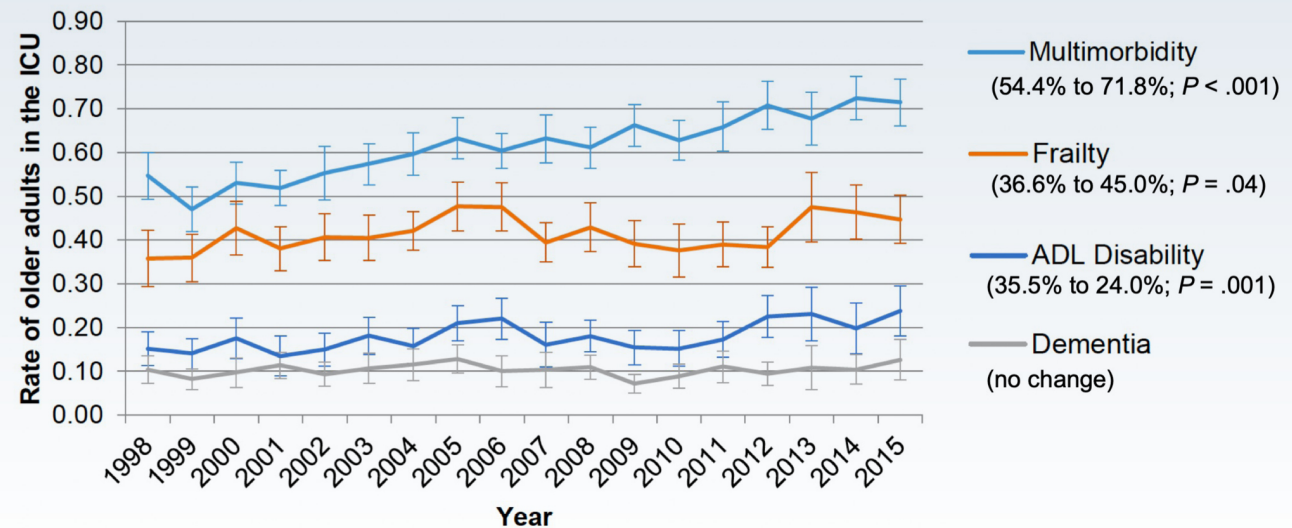
Retrospective study using Medicare-linked **Health and Retirement** Survey data

Included **6084** patients ≥ 65 years old and admitted to ICU from 1998-2015



RESULTS

Unadjusted Frailty, Disability, Dementia, and Multimorbidity



From 1998 to 2015, rates of preexisting disability, frailty, and multimorbidity increased in older patients admitted to the ICU.