

What Is the Prognostic Significance of the Number of Involved Nodes in Non-small Cell Lung Cancer (NSCLC) Patients?

STUDY DESIGN

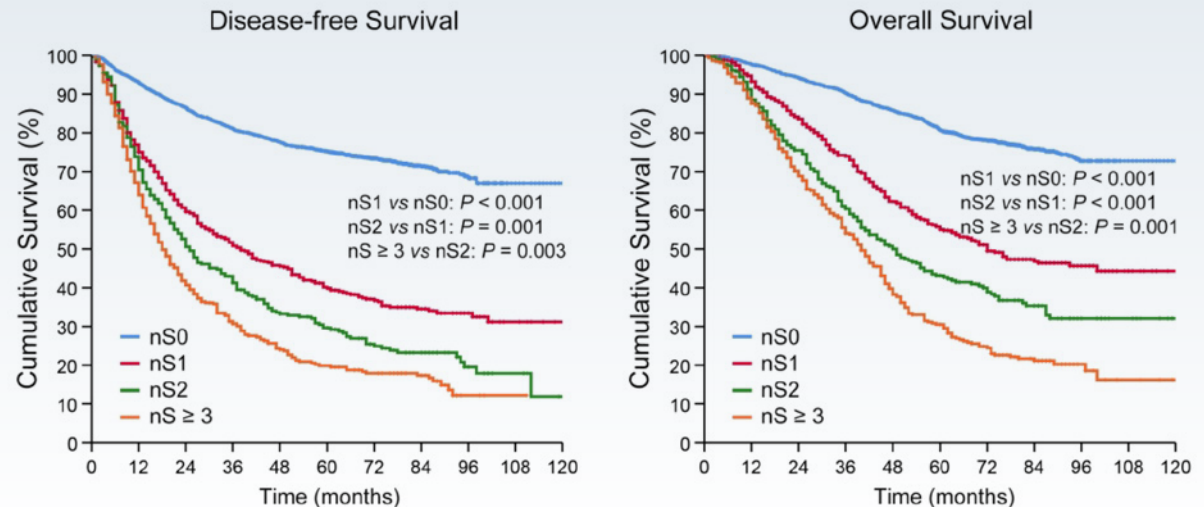
Cohort of 4011 patients with resected NSCLC

Classified into four subgroups according to the number of involved (N1 or N2) nodal stations (nS)

- None positive (nS0) (n=2762)
- One involved (nS1) (n=558)
- Two involved (nS2) (n=309)
- Three of more involved (nS \geq 3) (n=382)

RESULTS

nS classification was statistically different in terms of disease-free survival and overall survival both in univariate and multivariate analysis



Number of involved nodal stations has prognostic potential for reclassifying nodal classification in patients with resected NSCLC.