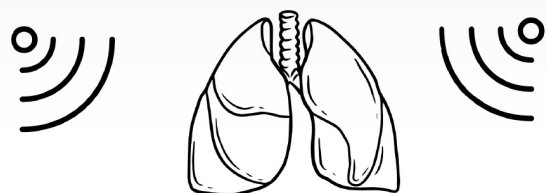


Does the Long-Term Risk of Cardiovascular Outcomes for Patients With Early-Stage NSCLC Differ by Tumor Laterality?

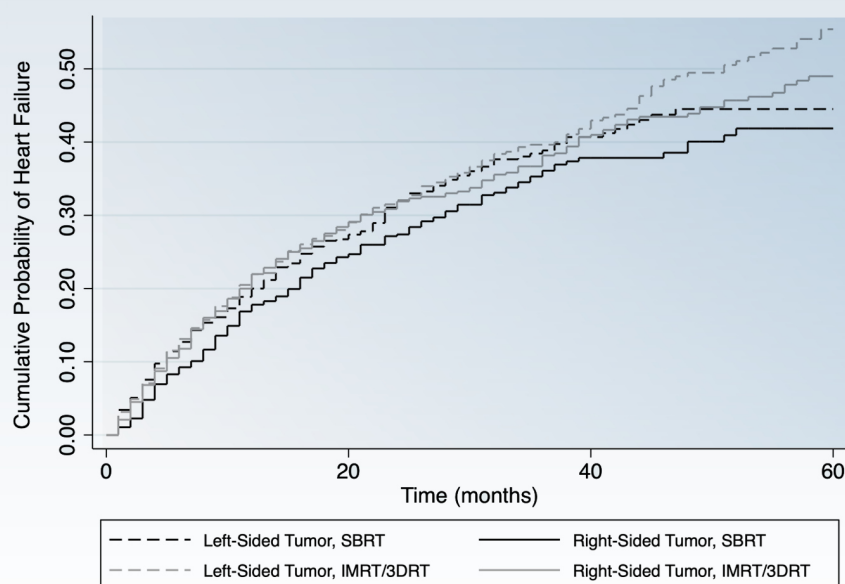
STUDY DESIGN

Used SEER Registry to examine **3,256 adults** with **node-negative stage I or IIA non-small cell lung cancer (NSCLC)** and who received stereotactic body radiation therapy (**SBRT**) or three-dimensional conformal radiation therapy/intensity-modulated radiation therapy (**3DCRT/IMRT**)

Compared left-sided tumors/radiation with right-sided tumors/radiation



RESULTS



No difference for patients who received SBRT by laterality

Patients who received 3DCRT/IMRT with **LEFT-SIDED** tumors had greater risk of:

- **Congestive heart failure** (HR 1.23; 1.01-1.48)
- **Percutaneous coronary artery intervention** (HR 2.24; 1.12-4.47)

Patients with left-sided NSCLC had higher rates of select cardiac events when treated with 3DCRT/IMRT compared with those with right-sided NSCLC, while those treated with SBRT showed no difference.