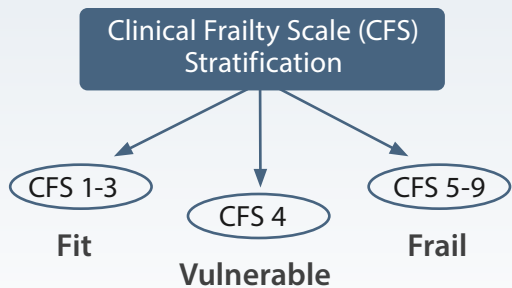


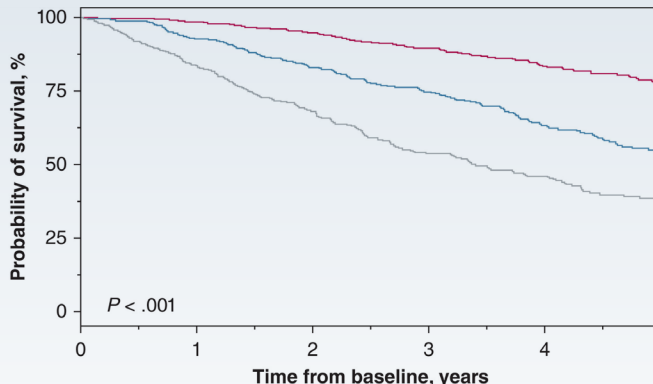
# Is the Clinical Frailty Scale a Valid Tool to Improve Risk Stratification in Patients With Fibrotic ILD?

## STUDY DESIGN

Multicenter prospective study of 1,587 patients with fibrotic interstitial lung disease (ILD)



## RESULTS



	Number at risk					
	0	1	2	3	4	5
— Fit	858	812	699	558	429	332
— Vulnerable	400	340	273	201	141	103
— Frail	329	252	178	118	88	54

— Fit (CFS ≤3) — Vulnerable (CFS 4) — Frail (CFS ≥5)

Patients in the frail subgroup had larger annual declines in FVC % predicted than patients in the fit subgroup

Frailty is a significant risk factor for mortality (HR 5.58; 95% CI, 3.64-5.76)

This study showed that the simple Clinical Frailty Scale contributes to risk stratification beyond established risk prediction parameters and is associated with pulmonary and functional disease progression in patients with fibrotic ILD.