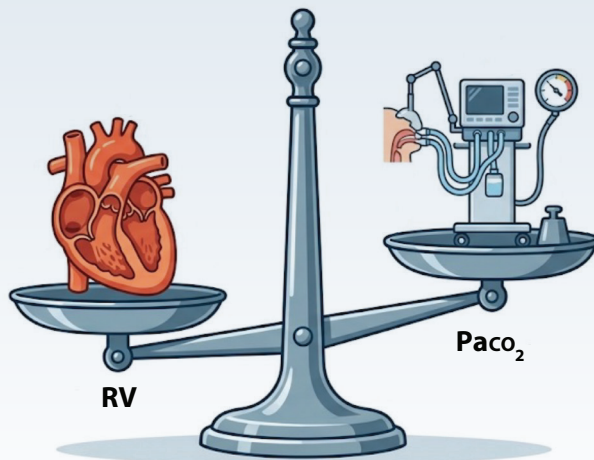


In Out-of-Hospital Cardiac Arrest, Is Right Ventricular Function Affected by a Specific Paco_2 Target?

STUDY DESIGN

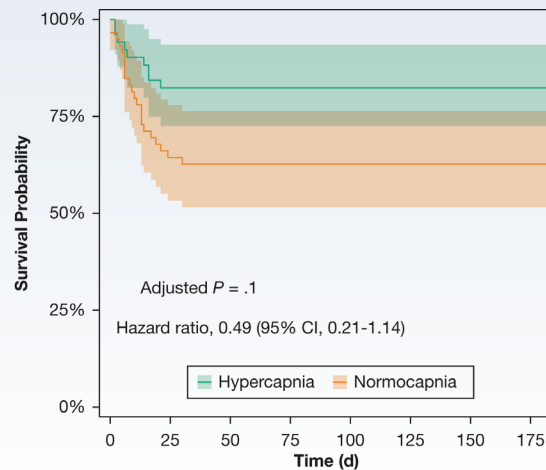
- Single-center, preplanned substudy of the TAME randomized controlled trial
- In 111 patients with out-of-hospital cardiac arrest, comparison of right ventricular (RV) function in those with **mild hypercapnia** (Paco_2 , 50-55 mm Hg) (n = 52) vs **normocapnia** (Paco_2 , 35-45 mm Hg) (n = 59) with transthoracic echocardiography and right heart catheterization (when available)



RESULTS

RV Systolic Dysfunction

- 25% in the hypercapnia group
- 64% in the normocapnia group



In this study, targeting hypercapnia compared with normocapnia resulted in improved RV functional parameters and RV failure following out-of-hospital cardiac arrest was associated with increased 6-month mortality.